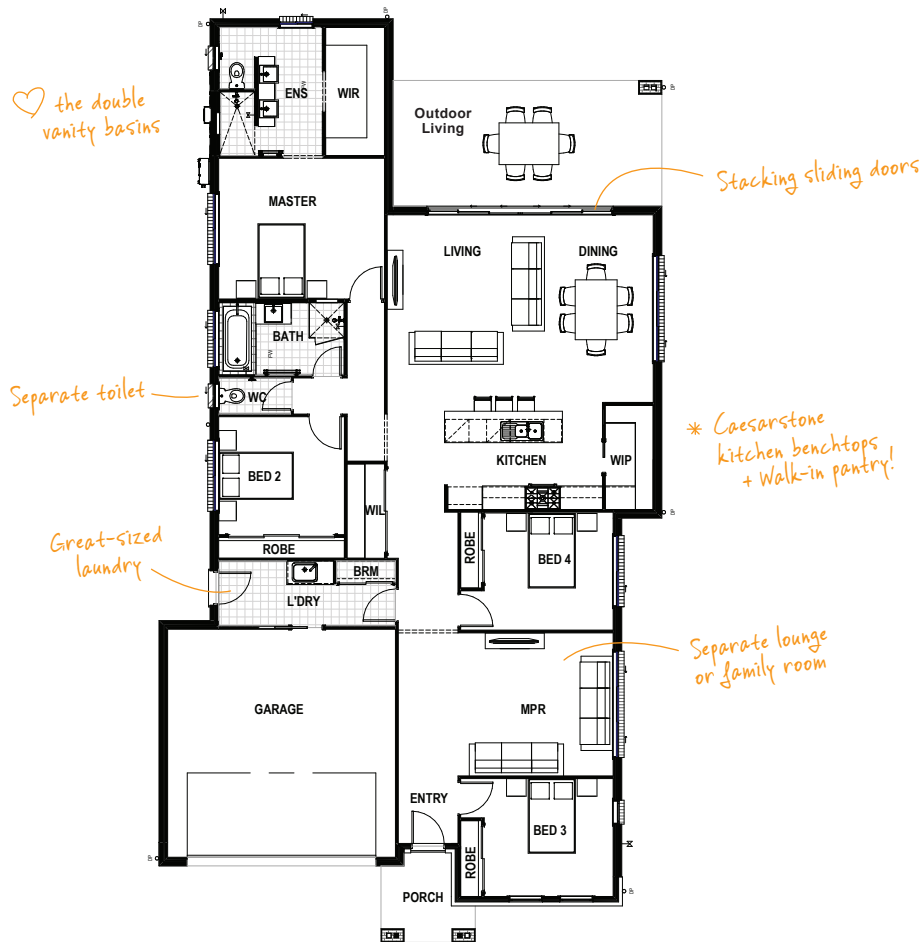


NORTHAVEN 26 MODERN

🛏️ 4 🚿 2 🛋️ 2 🚗 2

Classic, coastal style flows throughout this home, merging open-plan living with outdoor entertaining. With a second living area, an indulgent master retreat, and bags of storage at every turn, it's no wonder this home is easy to love.

TOTAL FLOOR AREA : 244.7m² (incl. Outdoor Living)



HOME DIMENSIONS

Master Suite	4.2 x 3.6m	Outdoor Living	6.8 x 3.2m
Bedroom 2	3.2 x 3.0m	Double Garage	5.8 x 5.8m
Bedroom 3	3.2 x 3.0m	House width [^]	12.8m
Bedroom 4	3.2 x 3.0m	House length [^]	23.5m
Living	3.7 x 5.0m	Total floor area	244.7m ²
Dining	3.0 x 5.0m	(incl. Outdoor Living)	
Multi-Purpose Room	5.4 x 3.6m		

[^]measured brick to brick



Contact us today!

P 07 3801 1328 E sales@drhomes.com.au DRHomes.com.au

DRHomes
the home team advantage™