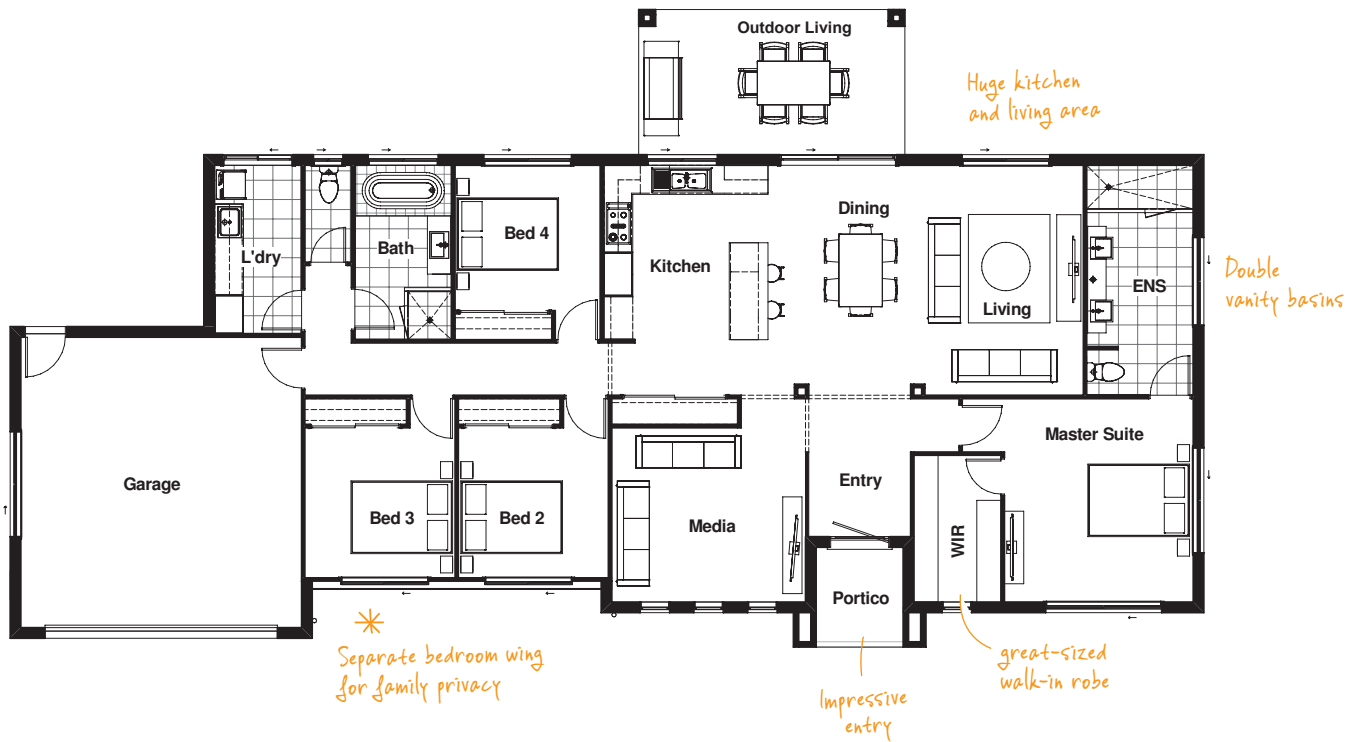


SUTHERLAND 25 MODERN

4 Beds 2 Baths 2 Living Areas 2 Car Spaces

With spacious open-plan living, a separate media room, and a luxurious master retreat, the Sutherland captures the very best in family life.

TOTAL FLOOR AREA : 236.8m² (incl. Outdoor Living)



HOME DIMENSIONS

Master Suite	4.2 x 3.9m	Outdoor Living	3.0 x 5.5m
Bedroom 2	3.1 x 3.1m	Garage	6.0 x 5.8m
Bedroom 3	3.1 x 3.1m	House width [^]	24.6m
Bedroom 4	3.0 x 3.0m	House length [^]	13.1m
Living	4.7 x 3.2m	Total floor area (incl. Outdoor Living)	236.8m ²
Dining	4.7 x 3.2m		
Media	4.2 x 4.0m		

[^]measured brick to brick



Contact us today!

P 07 3801 1328 E sales@drhomes.com.au DRHomes.com.au

DRHomes
the home team advantage™