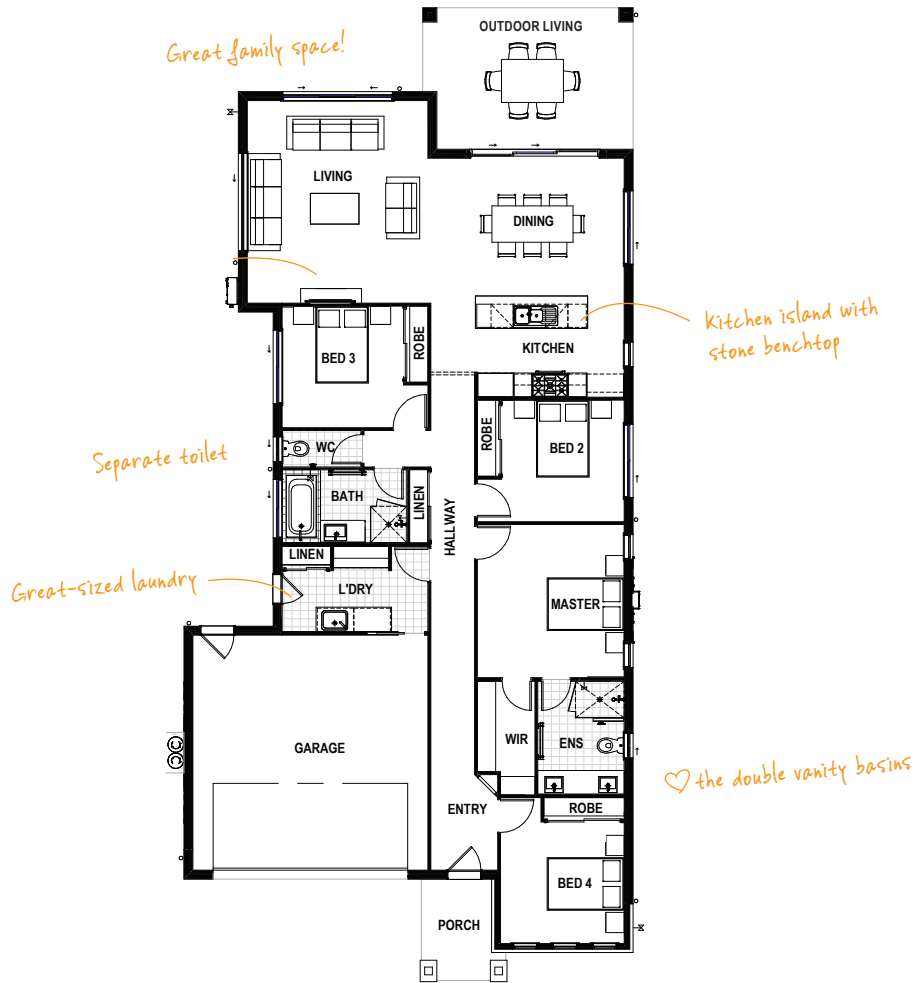


SHERWOOD 23 MODERN

🛏️ 4 🚿 2 🛋️ 1 🚗 2

Walk through the impressive front entry and you'll discover a well-thought-out family home with free-flowing indoor/outdoor living, all within view from the perfectly positioned kitchen island.

TOTAL FLOOR AREA : 212.6m² (incl. Outdoor Living)



HOME DIMENSIONS

Master Suite	3.8 x 3.6m	Outdoor Living	3.5 x 4.8m
Bedroom 2	3.0 x 3.0m	Double Garage	5.8 x 5.8m
Bedroom 3	3.0 x 3.0m	House width [^]	11.1m
Bedroom 3	3.0 x 3.0m	House length [^]	24.0m
Living	5.0 x 4.4m	Total floor area (incl. Outdoor Living)	212.6m ²
Dining	3.4 x 4.8m		

[^]measured brick to brick



Contact us today!

P 07 3801 1328 E sales@drhomes.com.au DRHomes.com.au

DRHomes
the home team advantage™