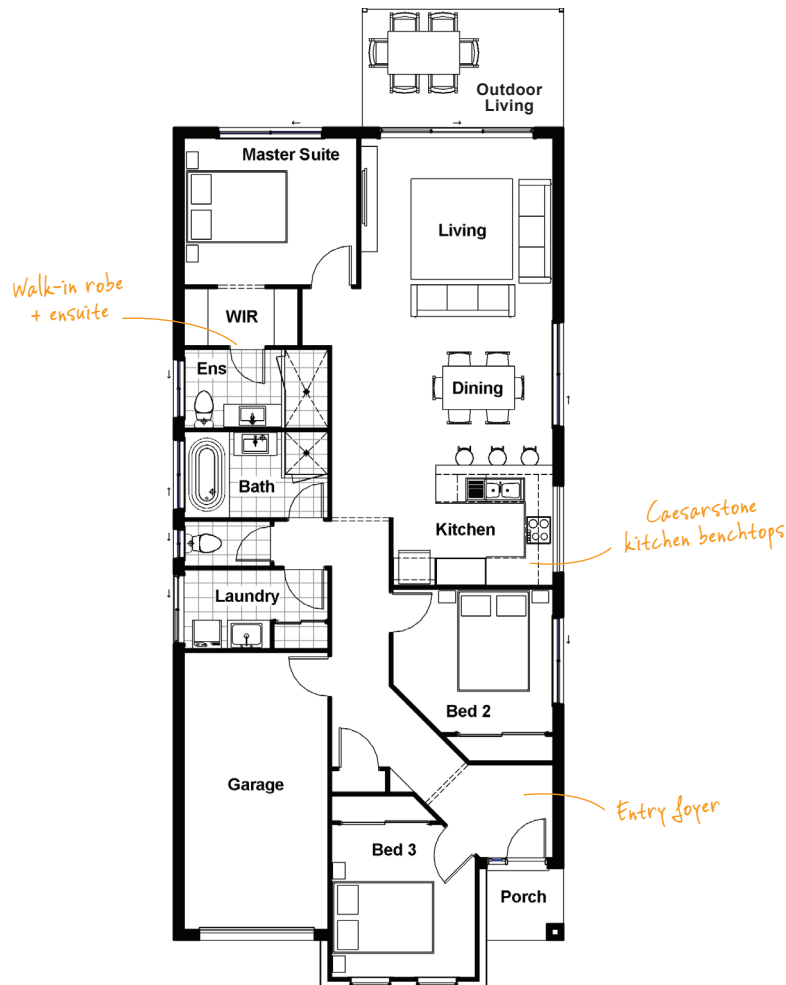


ROSE 15 MODERN

🛏️ 3 🚿 2 🛋️ 1 🚗 1

Perfect for first home buyers or empty nesters, this three bedroom home takes advantage of open plan design to maximise space and style.

TOTAL FLOOR AREA : 151.0m² (incl. Outdoor Living)



HOME DIMENSIONS

Master Suite	3.6 x 3.0m	Outdoor Living	4.2 x 2.5m
Bedroom 2	3.3 x 3.0m	Garage	3.0 x 5.8m
Bedroom 3	3.0 x 3.2m	House width ^a	8.1m
Living	4.0 x 3.7m	House length ^a	20.4m
Dining	4.6 x 3.1m	Total floor area (incl. Outdoor Living)	151.0m ²

^ameasured brick to brick



Contact us today!

📞 07 3801 1328 ✉️ sales@drhomes.com.au 🌐 DRHomes.com.au

DRHomes
the home team advantage™