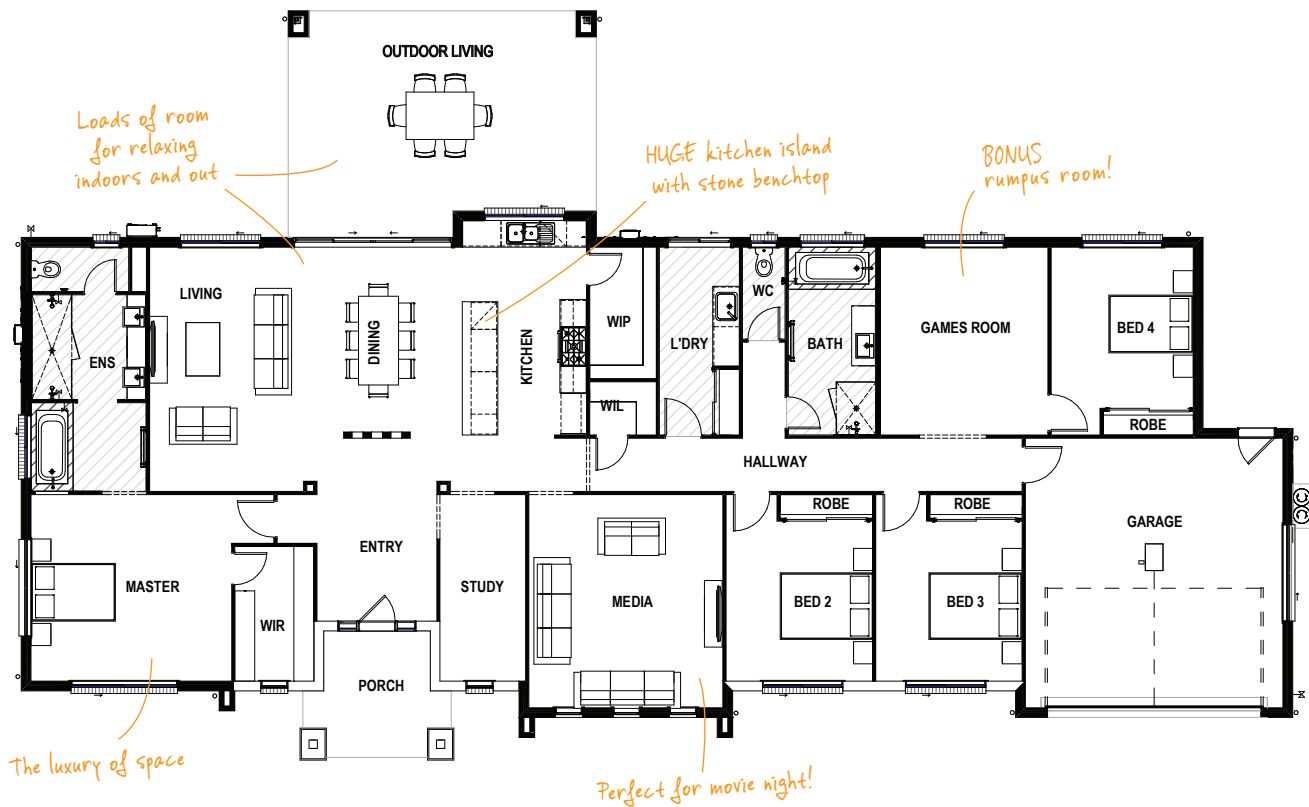


# WYNVALE 34 (+GAMES) MODERN

 4
  2
  3
  1
  2

This luxuriously spacious, family-friendly home boasts a huge open-plan living zone, media room, plus the added bonus of a family games room. Table tennis anyone?

TOTAL FLOOR AREA : 331.2m<sup>2</sup> (incl. Outdoor Living)



## HOME DIMENSIONS

Master Suite	4.2 x 4.5m	Games	3.7 x 4.2m
Bedroom 2	3.6 x 3.3m	Outdoor Living	5.1 x 6.9m
Bedroom 3	3.6 x 3.3m	Garage	6.0 x 5.8m
Bedroom 4	3.6 x 3.2m	House width <sup>A</sup>	28.6m
Living	5.5 x 4.0m	House length <sup>A</sup>	16.8m
Dining	4.1 x 3.0m	Total floor area (incl. Outdoor Living)	331.2m <sup>2</sup>
Media	4.8 x 4.3m		

<sup>A</sup>measured brick to brick



Contact us today!

P 07 3801 1328
 E sales@drhomes.com.au
 DRHomes.com.au

**DRHomes**  
 the home team advantage™