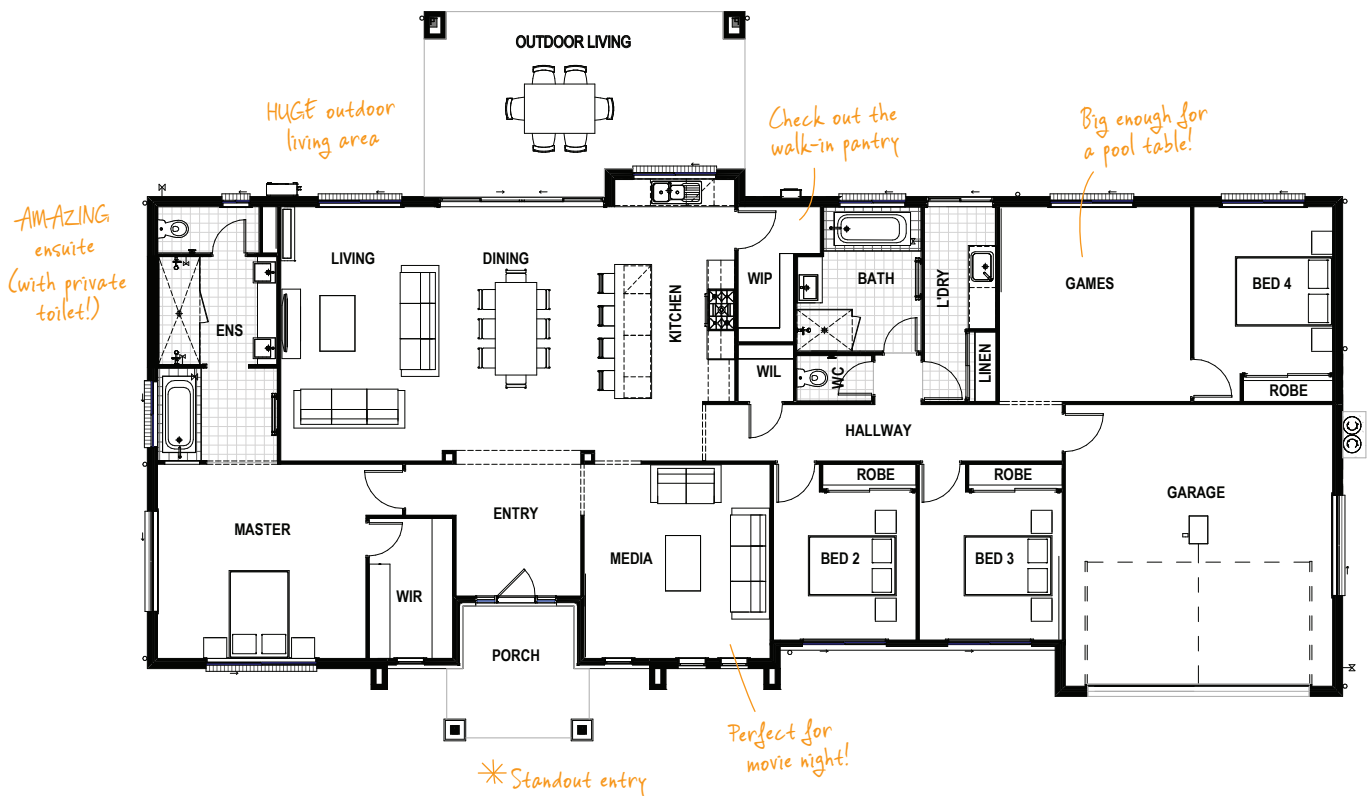


WOODCREST 30 (+GAMES) MODERN

🛏️ 4 🚿 2 🛋️ 3 🚗 2

What could make the Woodcrest even better? A games room, of course. With three living areas to choose from, this generously proportioned home has all the space you need for family and friends to come together and also spread out.

TOTAL FLOOR AREA : 298.4m² (incl. Outdoor Living)



HOME DIMENSIONS

Master Suite	4.2 x 4.5m	Games	4.2 x 4.1m
Bedroom 2	3.2 x 3.1m	Outdoor Living	4.0 x 6.9m
Bedroom 3	3.2 x 3.1m	Garage	6.0 x 5.7m
Bedroom 4	3.6 x 3.0m	House width ^a	25.9m
Living	5.5 x 3.5m	House length ^a	15.7m
Dining	5.5 x 3.2m	Total floor area	298.4m ²
Media	4.2 x 4.0m	(incl. Outdoor Living)	

^ameasured brick to brick



Contact us today!

P 07 3801 1328 E sales@drhomes.com.au DRHomes.com.au

DRHomes
the home team advantage™