

**SINGLE
STOREY**



STERLING 19

MODERN

🛏️ 3 🛁 2 🚗 1

This stylish family home offers spacious open plan living with a large chef's kitchen, three generous bedrooms and even a study.

STERLING 19
MODERN

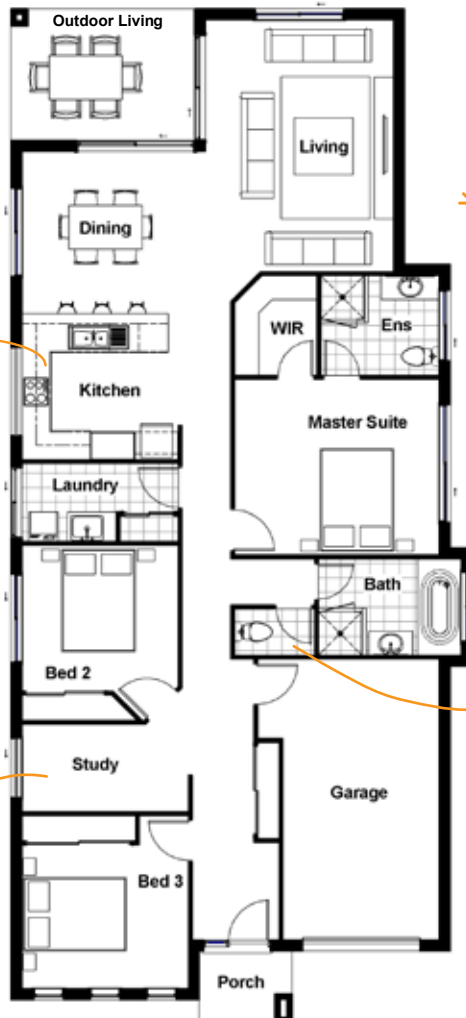
*
Open-plan living
flows through
to outside

Stone kitchen
benchtops

Good-sized
study

* higher ceilings
throughout
(2590mm)

Separate
toilet



HOME DIMENSIONS

Master Suite	4.2 x 3.6m
Bedroom 2	3.2 x 3.0m
Bedroom 3	3.4 x 3.0m
Living	3.9 x 5.2m
Dining	4.2 x 3.3m
Outdoor Living	3.8 x 2.7m
Garage	3.2 x 5.8m

House length	20.7m
House width	9.4m

TOTAL FLOOR AREA

(incl. Outdoor Living)	176.5m ²
------------------------	---------------------

EXTRA FEATURES
NO EXTRA COST

- ▶ Higher ceilings throughout (2590mm)
- ▶ Roller blinds to all windows (excluding garage)
- ▶ Caesarstone kitchen bench tops
- ▶ Reverse cycle split system air conditioner to living area
- ▶ Floor coverings throughout (choice of ceramic tiles or timber-look vinyl planks to living and kitchen, ceramic tiles to wet areas and carpet to bedrooms)
- ▶ Ceramic tiles to outdoor living
- ▶ Colorbond roof or flat profile roof tile
- ▶ 100mm recessed LED downlights

- ▶ Flyscreens to all opening windows and sliding glass doors
- ▶ 900mm stainless steel kitchen appliances
- ▶ Automatic Colorbond panel lift garage door
- ▶ Stainless steel ceiling fans to living, bedrooms and outdoor living
- ▶ 400 Series Hills Home Hub
- ▶ Epoxy floor finish to garage floor

For our full list of inclusions and specifications, talk to a Home Coach or visit www.drhomes.com.au

Talk to a Home Coach today. Call **07 3801 1328** or visit www.DRHomes.com.au