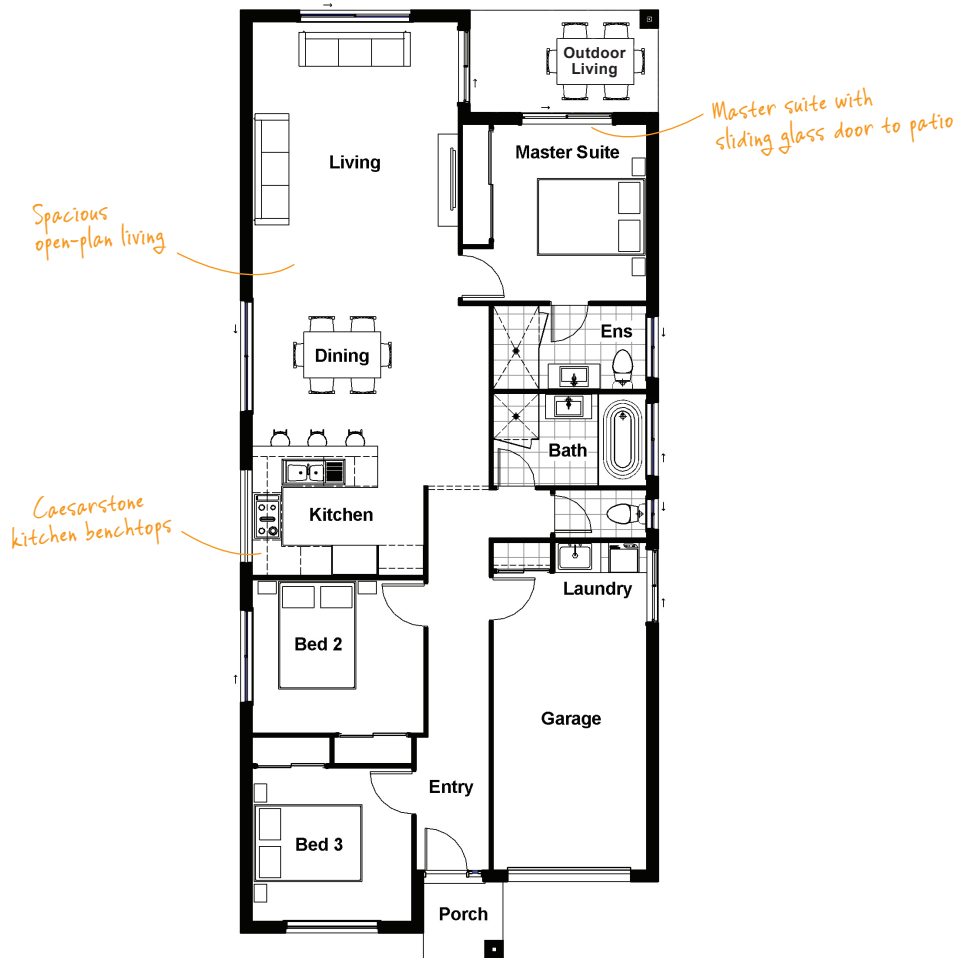


# ROSE 15 CONTEMPORARY

 3
  2
  1
  1

With a compact footprint, this home shows how great design and smart use of space can deliver so much more than you imagine.

TOTAL FLOOR AREA : 143.9m<sup>2</sup> (incl. Outdoor Living)



## HOME DIMENSIONS

|              |            |  |                     |
|--------------|------------|--|---------------------|
| Master Suite | 3.4 x 3.0m | Outdoor Living                             | 2.0 x 3.6m          |
| Bedroom 2    | 3.0 x 3.3m | Garage                                     | 5.8 x 3.0m          |
| Bedroom 3    | 3.0 x 3.1m | House width <sup>a</sup>                   | 8.1m                |
| Living       | 5.5 x 4.0m | House length <sup>a</sup>                  | 18.4m               |
| Dining       | 2.7 x 4.6m | Total floor area<br>(incl. Outdoor Living) | 143.9m <sup>2</sup> |

<sup>a</sup>measured brick to brick



Contact us today!

P 07 3801 1328
 E sales@drhomes.com.au
 DRHomes.com.au

**DRHomes**  
 the home team advantage™