

SINGLE
STOREY

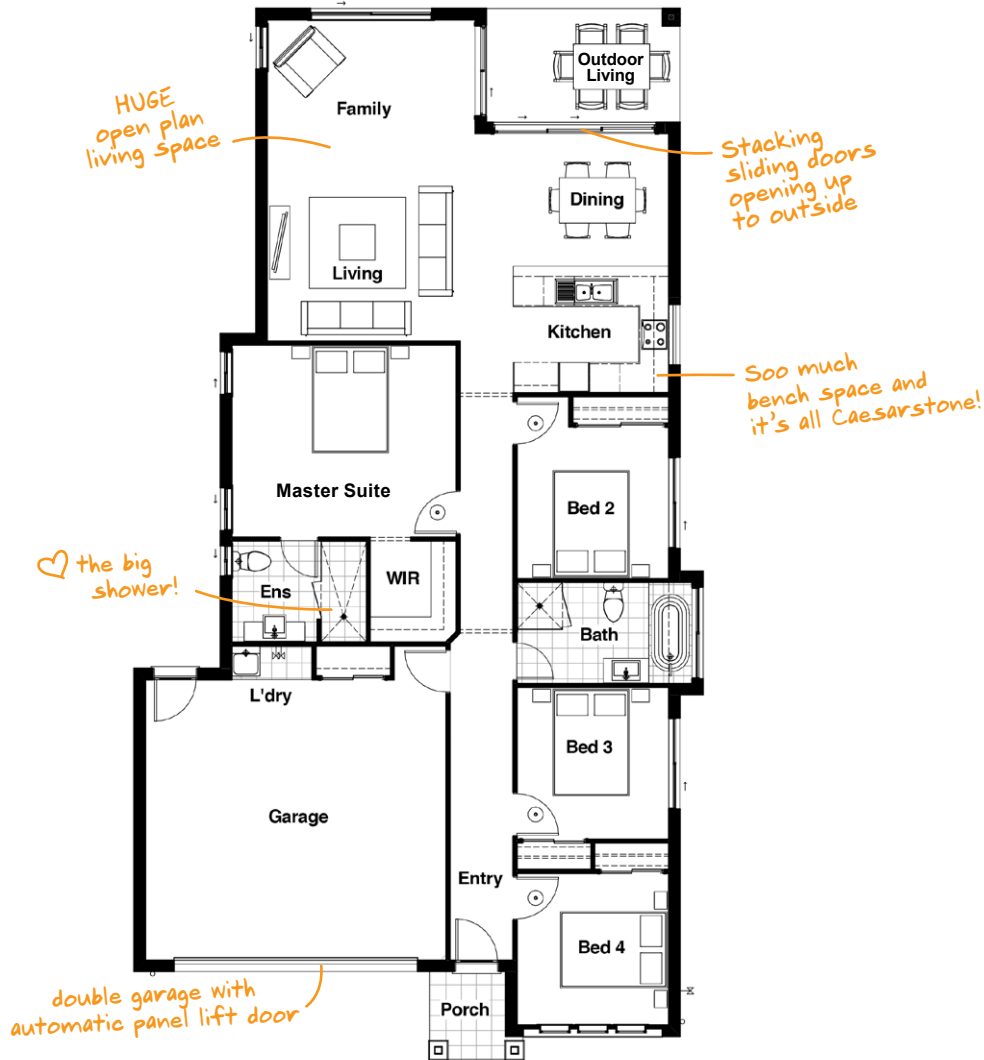


PALMER 20 MODERN

🛏️ 4 🚿 2 🚗 2

From first home to family home, the Palmer 20 is designed to adapt. There's a well separated bedroom wing at the front of the home plus two living spaces opening onto the outdoor living area – perfect for Queensland living.

PALMER 20 MODERN



HOME DIMENSIONS

Master Suite	3.8 x 4.4m
Bedroom 2	3.0 x 3.0m
Bedroom 3	3.0 x 3.0m
Bedroom 4	3.0 x 3.0m
Living	3.1 x 4.1m
Dining	2.6 x 4.1m
Family	3.1 x 4.1m
Outdoor Living	2.2 x 3.8m
Garage	5.5 x 5.9m

House length	20.7m
House width	11.2m

TOTAL FLOOR AREA

(incl. Outdoor Living)	186.0m ²
------------------------	---------------------

Your HomestarterPlus home comes with everything you need to get started **PLUS** a long list of extra features at no extra cost!

Colorbond steel roof



Caesarstone kitchen benchtops



Stainless steel kitchen appliances



LED lighting pack

premium tiles



quality carpet



vertical blinds



ceiling fans

fly screens



Automatic Colorbond garage door



NBN ready



much more...

For our full list of HomestarterPlus inclusions and specifications, talk to a Home Coach today or email sales@drhomes.com.au

Talk to a Home Coach today. Call **07 3801 1328** or visit www.DRHomes.com.au