

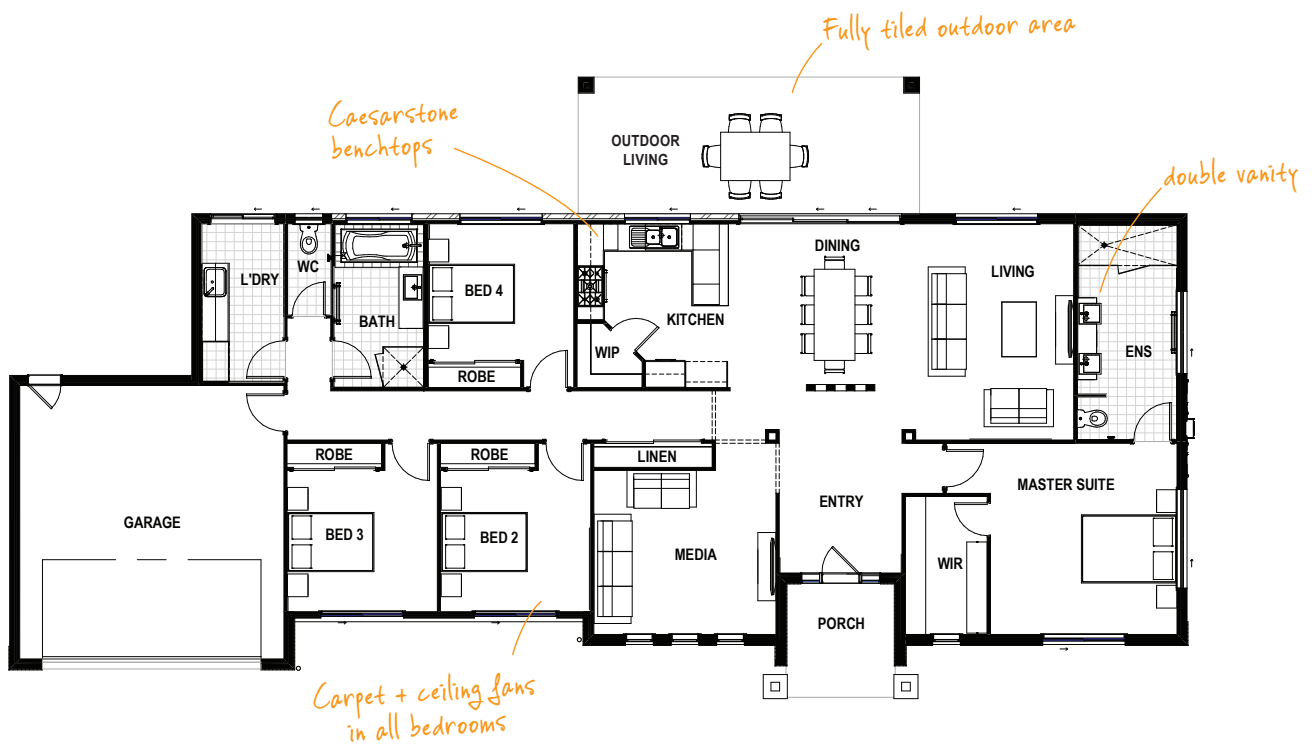


OAKMONT 27 MODERN

 4
  2
  2
  2

With four double bedrooms and spacious living including a dedicated media room, this home has everything you need to keep everyone happy!

TOTAL FLOOR AREA : 255.8m² (incl. Outdoor Living)



HOME DIMENSIONS

Master Suite	4.2 x 4.1m	Outdoor Living	3.0 x 7.5m
Bedroom 2	3.1 x 3.1m	Garage	6.0 x 5.8m
Bedroom 3	3.1 x 3.1m	House width [^]	25.9m
Bedroom 4	3.0 x 3.2m	House length [^]	13.6m
Living	4.7 x 3.8m	Total floor area (incl. Outdoor Living)	255.8m ²
Dining	4.7 x 3.7m		
Media	4.2 x 4.0m		

[^]measured brick to brick



Contact us today!

P 07 3801 1328
E sales@drhomes.com.au
DRHomes.com.au

DRHomes
 the home team advantage™