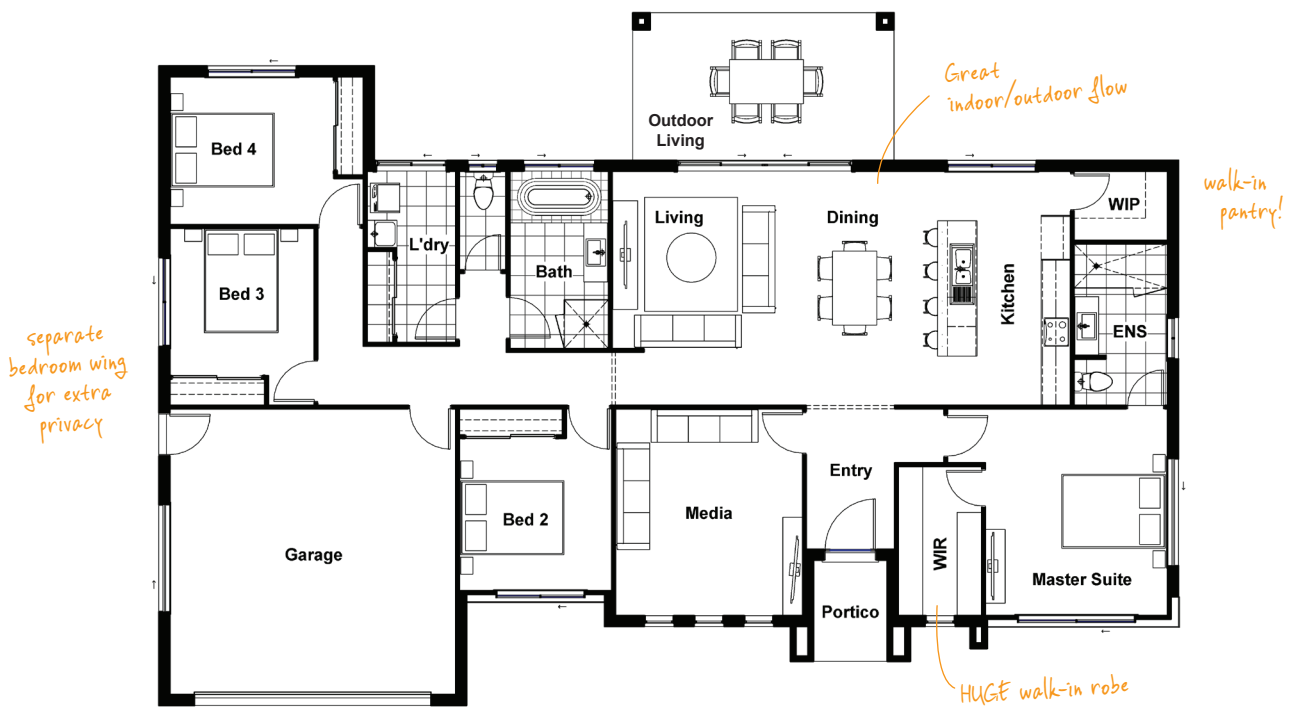


LONGWOOD 25 MODERN

 4
  2
  2
  2

With four double bedrooms and spacious living including a dedicated media room, this home has everything you need to keep everyone happy!

TOTAL FLOOR AREA : 230.5m² (incl. Outdoor Living)



HOME DIMENSIONS

Master Suite	4.2 x 3.7m	Outdoor Living	3.0 x 5.3m
Bedroom 2	3.1 x 3.1m	Garage	5.8 x 5.8m
Bedroom 3	3.0 x 2.9m	House width	20.7m
Bedroom 4	3.1 x 3.3m	House length	14.1m
Living	4.7 x 3.0m	Total floor area (incl. Outdoor Living)	230.5m ²
Dining	4.7 x 3.0m		
Media	4.2 x 3.8m		

*measured brick to brick



Contact us today!

P 07 3801 1328
E sales@drhomes.com.au
DRHomes.com.au

DRHomes
 the home team advantage™