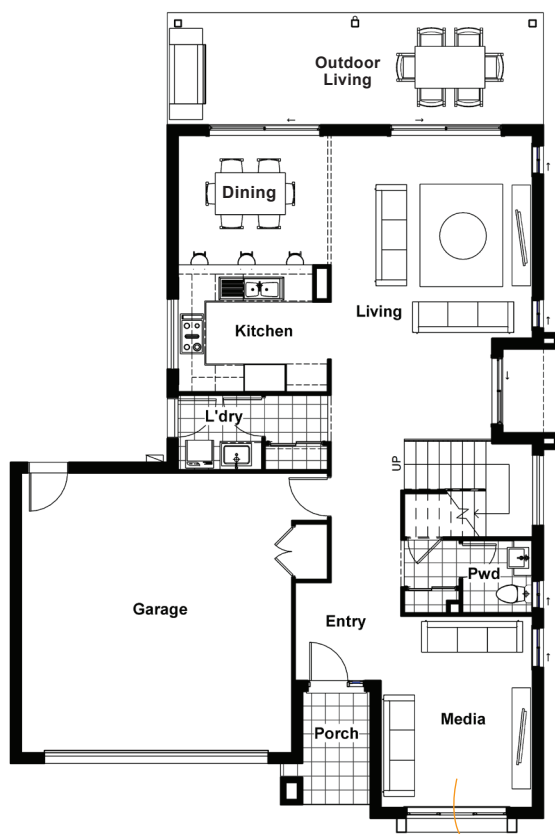


BALTIMORE 28 MODERN

🛏️ 4 🚿 2.5 🚗 3 🚲 2

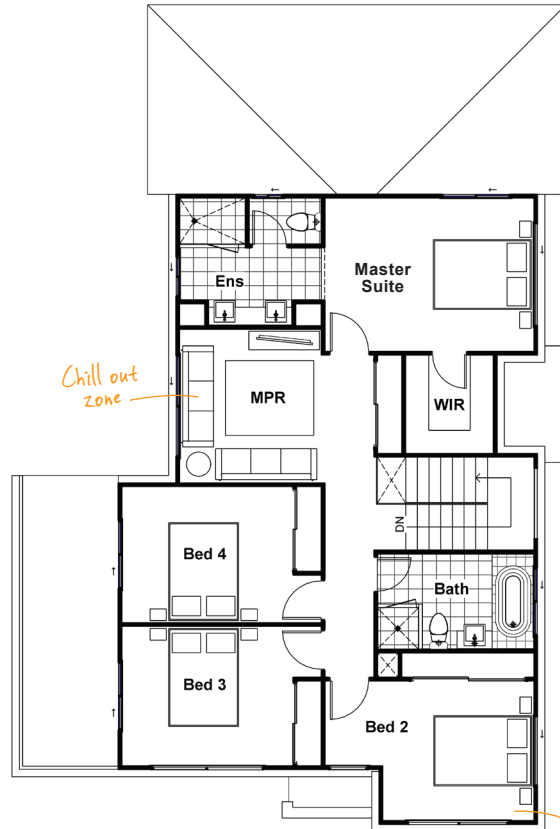
With bright and breezy open-plan living, a media room and an upstairs retreat, this home has all the space a growing family needs when it's time to be together and time to spread out.

TOTAL FLOOR AREA : 260.6m² (incl. Outdoor Living)



GROUND FLOOR

Perfect for movie nights



FIRST FLOOR

HUGE Master bedroom

Chill out zone

Roomy bedrooms

HOME DIMENSIONS

Master Suite	3.3 x 4.4m	Outdoor Living	2.4 x 8.6m
Bedroom 2	3.0 x 3.2m	Garage	6.0 x 5.8m
Bedroom 3	3.0 x 3.6m	House width [^]	11.7m
Bedroom 4	2.9 x 3.6m	House length [^]	17.2m
Living	6.6 x 4.4m	Total floor area	260.6m ²
Dining	2.7 x 3.1m	(incl. Outdoor Living)	
Media	4.1 x 3.2m	[^] measured brick to brick	
MPR	3.3 x 4.1m		



Contact us today!

P 07 3801 1328 E sales@drhomes.com.au DRHomes.com.au

DRHomes
the home team advantage™